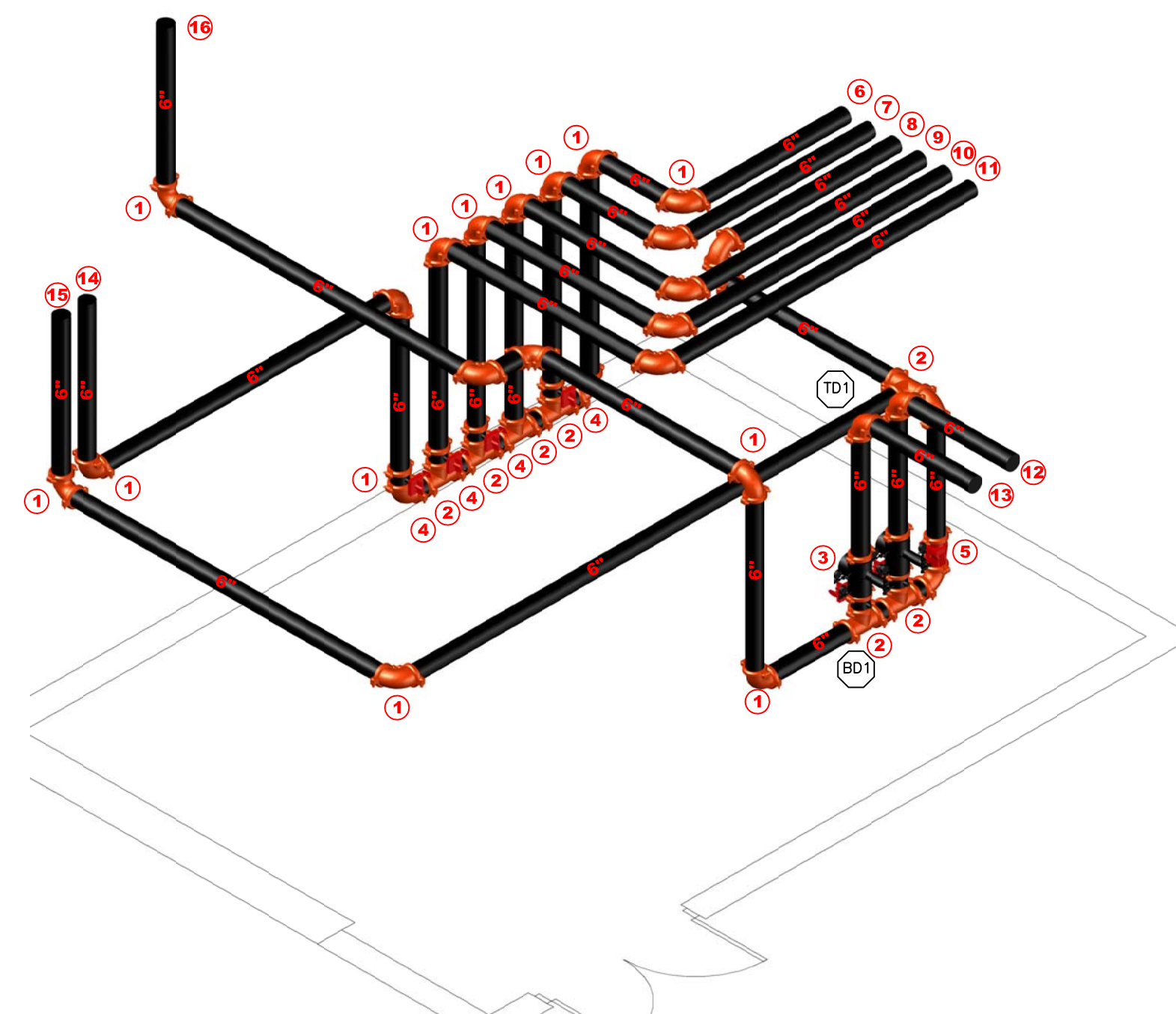


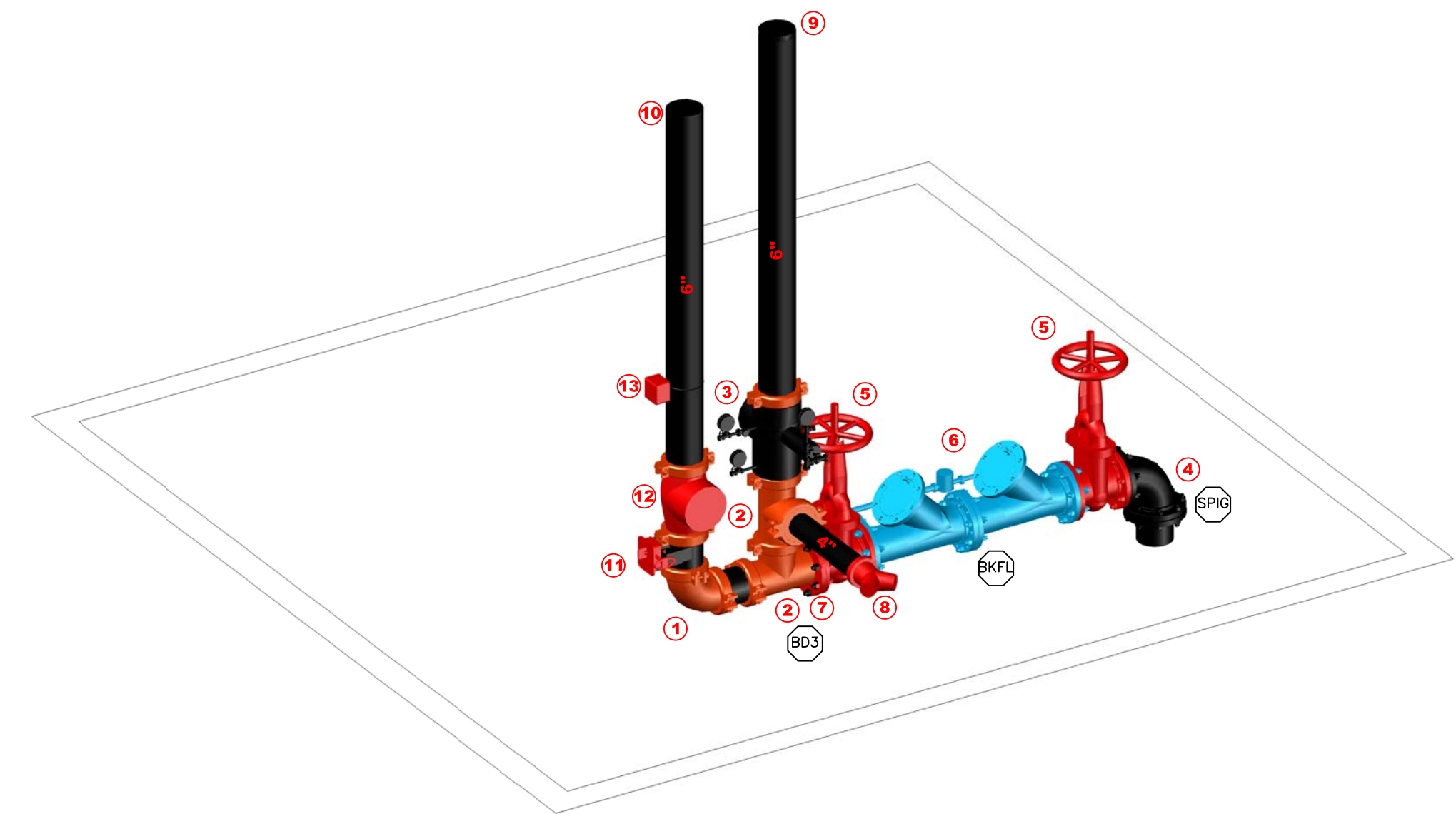
**LEVEL B2 FIRE ROOM PLAN** 1/4"=1'-0"

- RISER LEGEND**
- 6" GROOVED ELBOW
  - 6" GROOVED TEE
  - 6" VICTAULIC NXT GROOVED DRY VALVE
  - 6" TYCO BFV-N GROOVED BUTTERFLY VALVE
  - 6" TYCO CV-1 GROOVED CHECK VALVE
  - 6" TO STANDPIPE FDC SEE PLAN VIEW FOR CONTINUATION
  - 6" TO SPRINKLER FDC SEE PLAN VIEW FOR CONTINUATION
  - 6" TO STANDPIPE FDC SEE PLAN VIEW FOR CONTINUATION
  - 6" TO SPRINKLER FDC SEE PLAN VIEW FOR CONTINUATION
  - 6" TO STANDPIPE A SEE PLAN VIEW FOR CONTINUATION
  - 6" TO STANDPIPE B SEE PLAN VIEW FOR CONTINUATION
  - 6" TO LEVEL B2 DRY SYSTEM #1 SEE PLAN VIEW FOR CONTINUATION
  - 6" TO LEVEL B2 DRY SYSTEM #2 SEE PLAN VIEW FOR CONTINUATION
  - 6" TO STANDPIPE D SEE PLAN VIEW FOR CONTINUATION
  - 6" TO SPRINKLER FDC SEE PLAN VIEW FOR CONTINUATION
  - 6" SUPPLY SEE LEVEL G1 FOR CONTINUATION



**LEVEL B2 FIRE ROOM ISOMETRIC DETAIL** 1/4"=1'-0"

- RISER LEGEND**
- 6" GROOVED ELBOW
  - 6" GROOVED TEE
  - 6" VICTAULIC NXT GROOVED DRY VALVE
  - 6" TYCO BFV-N GROOVED BUTTERFLY VALVE
  - 6" TYCO CV-1 GROOVED CHECK VALVE
  - 6" TO STANDPIPE FDC SEE PLAN VIEW FOR CONTINUATION
  - 6" TO SPRINKLER FDC SEE PLAN VIEW FOR CONTINUATION
  - 6" TO STANDPIPE FDC SEE PLAN VIEW FOR CONTINUATION
  - 6" TO SPRINKLER FDC SEE PLAN VIEW FOR CONTINUATION
  - 6" TO STANDPIPE A SEE PLAN VIEW FOR CONTINUATION
  - 6" TO STANDPIPE B SEE PLAN VIEW FOR CONTINUATION
  - 6" TO LEVEL B2 DRY SYSTEM #1 SEE PLAN VIEW FOR CONTINUATION
  - 6" TO LEVEL B2 DRY SYSTEM #2 SEE PLAN VIEW FOR CONTINUATION
  - 6" TO STANDPIPE D SEE PLAN VIEW FOR CONTINUATION
  - 6" TO SPRINKLER FDC SEE PLAN VIEW FOR CONTINUATION
  - 6" SUPPLY SEE LEVEL G1 FOR CONTINUATION



**LEVEL G1 WATER ROOM ISOMETRIC DETAIL** 1/2"=1'-0"

- RISER LEGEND**
- 6" GROOVED ELBOW
  - 6" GROOVED TEE
  - 6" VICTAULIC NXT GROOVED DRY VALVE
  - 6" FLANGED ELBOW
  - 6" OS&Y w/TAMPER SWITCH
  - 6" WATTS 750 DCDA BACKFLOW PREVENTER
  - 6" FLANGED X GROOVED ADAPTER
  - 4" X 2 1/2" X 2 1/2" SIAMESE FIRE DEPARTMENT CONNECTION
  - 6" TO LEVEL G1 DRY SYSTEM #3 SEE PLAN VIEW FOR CONTINUATION
  - 6" SUPPLY TO LEVEL B2 SEE PLAN VIEW FOR CONTINUATION
  - 6" TYCO BFV-N GROOVED BUTTERFLY VALVE
  - 6" TYCO AV-1 GROOVED ALARM CHECK VALVE
  - 6" FLOW SWITCH WIRED BY OTHERS

**GENERAL NOTES**

- ALL PIPE LOCATIONS ARE TO BE FIELD MEASURED PRIOR TO FABRICATION AND INSTALLATION BY FIRE SPRINKLER CONTRACTOR.
- ALL DIMENSIONS SHOWN ARE CENTER TO CENTER.
- HIGH TEMPERATURE HEADS ARE TO BE INSTALLED WHERE REQUIRED.
- ALL PIPE AND HANGERS ARE TO BE INSTALLED AS PER NFPA #13.
- HANGERS ARE TO BE U.L. LISTED AND FM APPROVED.
- SEE PLAN VIEW FOR COMPLETE GENERAL NOTES

**NOTES TO THE OWNER**

- THE FIRE SPRINKLER SYSTEM MUST BE MAINTAINED AND TESTED REGULARLY BY YOU OR YOUR AGENTS ARE IN ACCORDANCE WITH NFPA.
- YOU SHALL MAINTAIN SUFFICIENT HEAT THROUGHOUT THE PREMISES TO PREVENT THE FIRE SPRINKLER SYSTEM FROM FREEZING.
- YOU SHALL INFORM TENANTS OF PROPER CARE NECESSARY TO MAINTAIN THE SYSTEM.
- IF THE CONSTRUCTION OR OCCUPANCY IS ALTERED IN ANY WAY, THE FIRE SPRINKLER SYSTEM WILL HAVE TO BE UPDATED ACCORDINGLY

**ABBREVIATIONS**

UOS-UNDERSIDE OF SLAB	RN-RISER NIPPLE	[10'-0"]	PIPE ELEVATION AFF	(1)	HYDRAULIC NODE POINT
TOS-TOP OF STEEL	SP-SPRIG	[+12"]	ELEVATION BELOW TOP STEEL	---	HANGER LOCATION
BTS-BELOW TOP STEEL	CL-CENTERLINE	TOS	ELEVATION TOP OF STEEL	+	SWAY BRACE
AFF-AFTER FINISH FLOOR	OC-ON CENTER	o	RISE UP - DOWN	↕	FIRE DEPT CONNECTION
TOR-TOP OF RISER	NIC-NOT IN CONTRACT	⊗	RISER - STANDPIPE	⊕	ELECTRIC BELL
BOR-BOTTOM OF RISER	SLV-SLEEVE	---	NEW PIPE	---	FLOW SWITCH
		---	EXISTING PIPE	---	FIRE HYDRANT

**SYMBOL LEGEND**

SYMBOL	DESCRIPTION	SYMBOL	DESCRIPTION
(1)	HYDRAULIC NODE POINT	---	HANGER LOCATION
---	HANGER LOCATION	+	SWAY BRACE
↕	FIRE DEPT CONNECTION	⊕	ELECTRIC BELL
⊕	ELECTRIC BELL	---	FLOW SWITCH
---	FLOW SWITCH	---	FIRE HYDRANT

**NUMBER OF SPRINKLERS**

TOTAL THIS SHEET		TOTAL THIS JOB				
DESCRIPTION	TEMP	FINISH	SPRK ID#	K-FACT	NPT	QTY

**DETAILS FIRE SPRINKLER PLAN**

DRAWING TITLE: DETAILS FIRE SPRINKLER PLAN

CONTRACT NO: FS11-0100      DRAWN BY: PJH

SCALE: 1/4"=1'-0"      DATE: 06-30-2011

REVISION:

#	DATE	DESCRIPTION

CONTRACTOR:

PROJECT:

**PJH**  
**FIRE SPRINKLER DESIGN, L.L.C.**  
 36 Ginger Court, Building 5, Suite 36  
 Eatontown, NJ 07724-1659  
 Telephone: 732-440-4657  
 Facsimile: 732-440-4658  
 www.pjhfiresprinklerdesign.com

MEMBER

HYDRATEC

SHEET FS-1 OF 1